

## From the Manager

I want to say, “Thank you!” to all of you who responded to the EPA during the comment period on their new existing power plant rule. While we don’t know the full effect your comments will have yet, we do know that there were over a million comments submitted nationwide from co-op member/owners just like you.

Hopefully, the EPA will listen and take a more common-sense approach to these types of rules, keeping in mind the existing stranded costs you, as co-op owners, have invested in existing power generation facilities. So, again, thank you for taking the time to respond.

On another note, just the other day I was driving to work and I heard a commercial come on the radio saying, “Don’t let the big, bad utility take advantage of you! Call now to learn about the benefits of solar.” The commercial even went on to say that utilities were so worried about solar energy, the companies were raising base rates in order to cover the loss of revenue.

Let me be clear, at your cooperative, nothing could be further from the truth!

While we do at times need to raise rates in order to keep your system maintained, your democratically-elected board takes the matter very seriously and only approves rate changes after certain measures are taken. These measures include a cost-of-service study, as well as a financial analysis to determine if there is any other route. The truth is, when you consider the number of members-per-mile your cooperative

serves, I think we do a darn good job of keeping rates pretty reasonable.

Now, don’t get me wrong. Distributed generation installations like solar, wind, small hydro, digesters and others definitely have a place out there. In fact, there may even be times when those types of installations are beneficial to a member. But, you can bet your cooperative won’t be using scare tactic language like that used in those commercials when it comes to giving you information about your options.

If you’re interested in learning more, and even checking out the claims of those guys on the radio, just give me a call. I’d be happy to help you see the whole picture. That way, you can make an informed decision.

In the meantime, we will continue to make improvements to your cooperative infrastructure. Right now, we are in the midst of several major line upgrades, with the hopes

of improving reliability across large parts of the system. Our forestry crews will soon be back to work, and we are finalizing our new mapping system in order to better streamline the workflow here at your cooperative. In addition, your cooperative is working hard to find ways to cut costs, while still maintaining a high level of service.

Many of these measures are being taken in order to modernize your co-op, while also providing more efficient ways of doing business. In the end, it’s about serving you, our member/owners in the best way we know how.



Ed VanHoose  
Manager

### Energy Efficiency Tip of the Month



Did you know that 90 percent of the energy used to operate a washing machine comes from using hot water? A simple switch from hot to cold can save a great deal of energy! Also, consider air drying or even line drying to save even more household energy.

Source: U.S. Department of Energy

# Minutes of Board of Trustees Meeting

Regular meeting November 24, 2014

**T**rustees present were: Frank Czyzewski, Bill Croy, Neil Gould, Frank Herman, Kevin Logan, Bob Pierson, Richard Rudolphi, Danny Schnepfer and Greg Smith. Also present were Executive Vice President/General Manager Ed VanHoose, and Cooperative Attorney Melanie Pearce. The invocation was given by Greg Smith.

Approved the minutes of the regular meeting held October 27, 2014.

Accepted 24 new members for service.

Canceled 18 members no longer receiving service.

Approved work orders in the amount of \$15,062.04.

Accepted the disbursement list for the month of October, 2014.

Heard a report by Trustee Logan concerning the recent AIEC regular monthly meeting, including the Executive Summary.

Heard a report by Trustee Herman concerning the recent SIPC Board meeting, including monthly highlights and Discussed, Revenue Ratio share percentages of overcharges and property permit. Informed by Gen. Mgr. VanHoose

of new section in Board packet: "Labor Relations", and the recent training attended by himself and the Committee, regarding the same.

**Approved** transition to Executive Session.

Thereafter Approved closing Executive Session and transition to Open Session.

**Approved** not entering into mid-term Union Contract negotiations as requested, on the issue of health insurance.

**Approved** Executive V.P./ General Manager Evaluation as presented.

**Heard** reports from Gen. Mgr. VanHoose as listed:

- a. **Reviewed** Financial reports, specifically Form 7;
- b. **Informed** of future consideration of a monthly equalizer plan;
- c. SIPC Power Bill for October 2014;
- d. **Heard** a report as to employee healthcare network issues;
- e. **Reviewed** article on Fracking Rules;
- f. **Informed** of CRC provided rate notification;
- g. **Heard** a report as to handling retirement of capital credits from deceased estates;
- h. **Heard** a report as to Touchstone Energy expansion to increase relevance to CECI Members;
- i. **Heard** a report as to NERC comments contradicting EPA

regarding reliability of EPA regulation;

- j. **Reviewed** 2015 Budget information;
- k. **Heard** a report regarding NRECA dues;
- l. **Heard** a report regarding the 2015 Work Plan and development plans for Capital Credit disbursement;
- m. **Reviewed** 2014 property tax assessments;
- n. **Heard** a report regarding the upcoming Wabash Valley Service Co. Annual Meeting;
- o. **Discussed** plans for the upcoming NRECA Annual Meeting;
- p. **Appointed** Frank Czyzewski as Voting Delegate, and Richard Rudolphi as Alternate to the NRECA Annual Meeting;

**Reminded** of upcoming Board and Employee Christmas Party.

**Discussed** hams as Christmas bonus for Board and Employees.

**Approved** retirement of Capital Credits to the estate of 1 deceased Member pursuant to Cooperative Policy.

**Informed** of the retirement of Duane Mercer of London Witt Group.


**Reviewed** the CFC Board Report.

**Discussed** need to retire aged wiring containing steel.

**Disbursed** "NRECA Continuing Education Courses, 2014-15.

Adjournment.

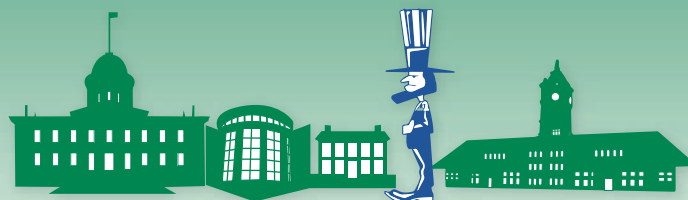
## Clay Electric Co-operative, Inc.

A Touchstone Energy® Cooperative 

7784 Old Hwy. 50,  
P.O. Box 517,  
Flora, Illinois 62839  
618-662-2171  
800-582-9012

Office hours:  
7:30 a.m. — 4:00 p.m.

[www.ceci.coop](http://www.ceci.coop)  
[www.facebook.com/ceci.coop](http://www.facebook.com/ceci.coop)



2015 Youth Day <sup>3.25.15</sup>  
Sponsored by the Illinois Electric and Telephone Cooperatives

Be sure to see page 16d for Youth Day information.

# Co-op energy efficiency rebates - round three


The HomE program (pronounced home E) started in 2010 with grant funding from the American Recovery and Reinvestment Act program through the Illinois Department of Commerce and Economic Opportunity's State Energy Plan. Clay Electric Cooperative and other co-ops across the state have helped make energy efficiency improvements to hundreds of homes with these funds.

The HomE program's initial success meant there would be approval for a second round of funding. And now there is a third round, but it is smaller and will likely be the last of the funds.

If you didn't get a chance to participate in the first or second round of rebates, you now have a third and final chance. HomE 3.0 rebates are available until funding runs out, or until May 31. The program starts on February 1 and funds are on a first-come, first-served basis. So don't wait.

With the help of the first round of HomE funding several Clay Electric Cooperative members-owners installed geothermal heat pumps, air-source heat pumps, and made insulation and weatherization improvements.

"We know a lot of members were unable to participate in the first two rounds of the HomE program for



## HomE 3.0 incentive rebates include:

Geothermal system.....	\$1,000
Air-Source Heat Pump (16 SEER or higher) .....	\$500
Insulation and Weatherization.....	30 percent of total project cost, up to \$500
Heat Pump Water Heater .....	\$250

With the help of the first two rounds of HomE funding, several Clay Electric member-owners received funds for projects such as, home weatherization, Geo-Thermal and Air Source heat pump installations.

a variety of reasons," says Member Services Director Doug Hockman. "All cooperative members are eligible for HomE 3.0. These rebates, plus the federal income tax credits that are available for some of the projects,

make this a great time to make your home more energy efficient."

For more information contact Doug Hockman at Clay Electric Cooperative 618-662-2171 or 800-582-9012.



## THEY'RE NEVER TOO YOUNG TO START SAVING ENERGY.

Find out how your local electric cooperative can help you lead by example at [TogetherWeSave.com](http://TogetherWeSave.com).



Clay Electric Co-operative, Inc.

A Touchstone Energy® Cooperative 

# Youth to Washington

The Clay Electric Cooperative sponsored “Youth to Washington” tour sends students to Springfield, IL, and also to Washington, DC to see firsthand, Government in action. Students will travel with other students from the area and the State of Illinois on both trips. The Youth Day trip will include a visit to historic sites such as the Supreme Court, the Illinois State Capital, the Abraham Lincoln Library and Museum, and the Old State Capital in Springfield.

On the Washington, DC tour you will visit Gettysburg, the Smithsonian Museums, the Holocaust Museum, the Washington Monument, The Federal Capital Building, and many more interesting places.

The dates for the trips will be: Youth Day in Springfield IL - March 25, 2015. The Youth to Washington Tour will be June 12-19, 2015.

Each year 1 Junior student from Clay City, Flora, and North Clay High Schools is chosen to represent their school, and Clay Electric Cooperative (CECI), on the tour.

New for 2015 will be that the students will be chosen by CECI instead of the schools, and those students selected will also have the opportunity to work as a paid Intern during the summer.

To apply; log onto [www.cecicoop.com](http://www.cecicoop.com), or [www.facebook.com/cecicoop](http://www.facebook.com/cecicoop) to print the application form, fill out the form, complete the essay, and return it to either your Guidance Office, or to Clay Electric Cooperative. Dates for submittal and complete rules will also be on the site.

